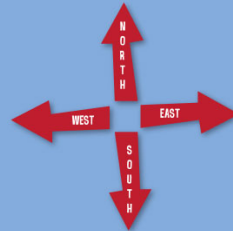
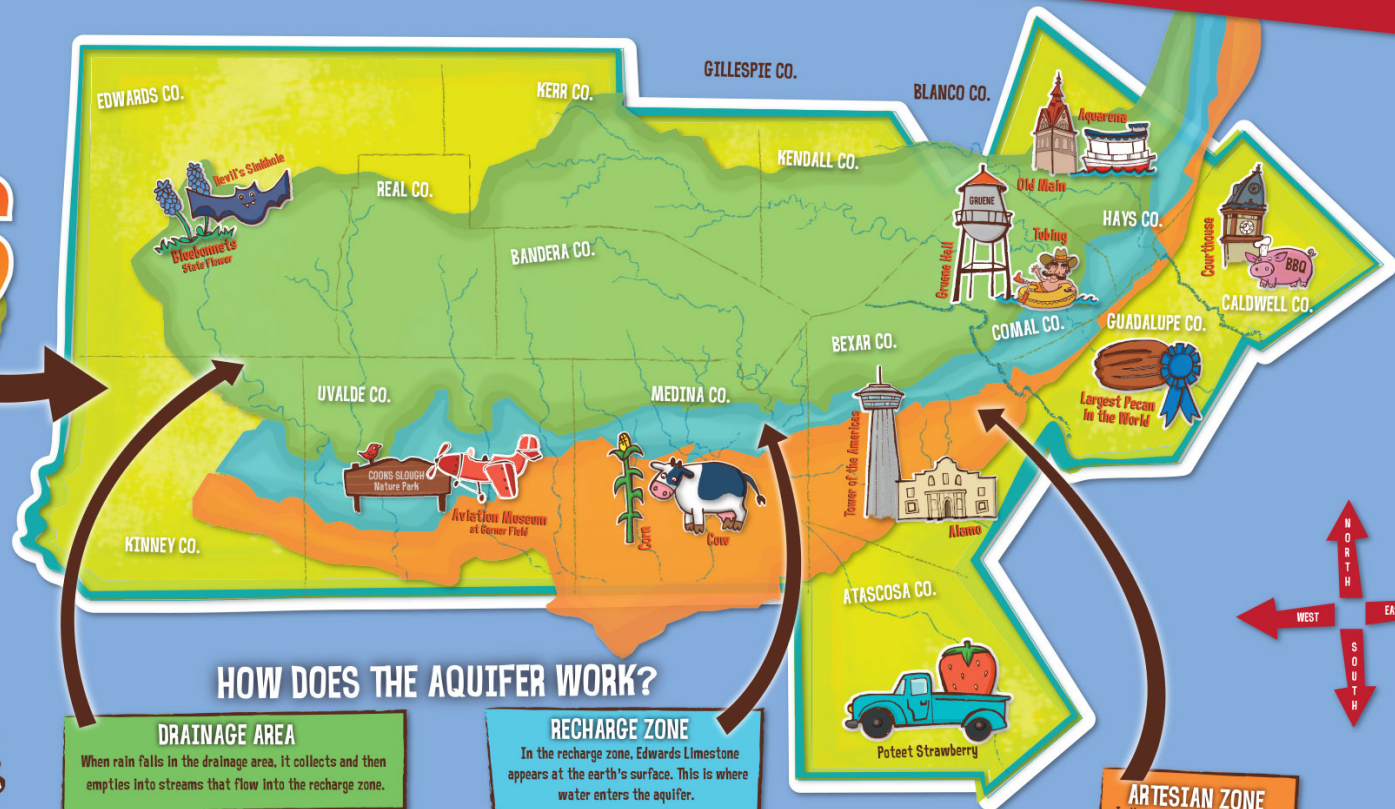


# EDWARDS AQUIFER REGION



## HOW DOES THE AQUIFER WORK?

**DRAINAGE AREA**  
When rain falls in the drainage area, it collects and then empties into streams that flow into the recharge zone.

**RECHARGE ZONE**  
In the recharge zone, Edwards Limestone appears at the earth's surface. This is where water enters the aquifer.

**ARTESIAN ZONE**  
In the artesian zone, empty spaces in the limestone rock are filled with water that is under pressure. If there is a lot of pressure, water is forced to the surface through openings such as artesian springs and free-flowing wells. If there isn't enough pressure, water can be pumped to the surface using wells.

