

Edwards Aquifer Recharge Zone and Contributing Zone Map  
Edwards Aquifer Authority Rule Chapter 713

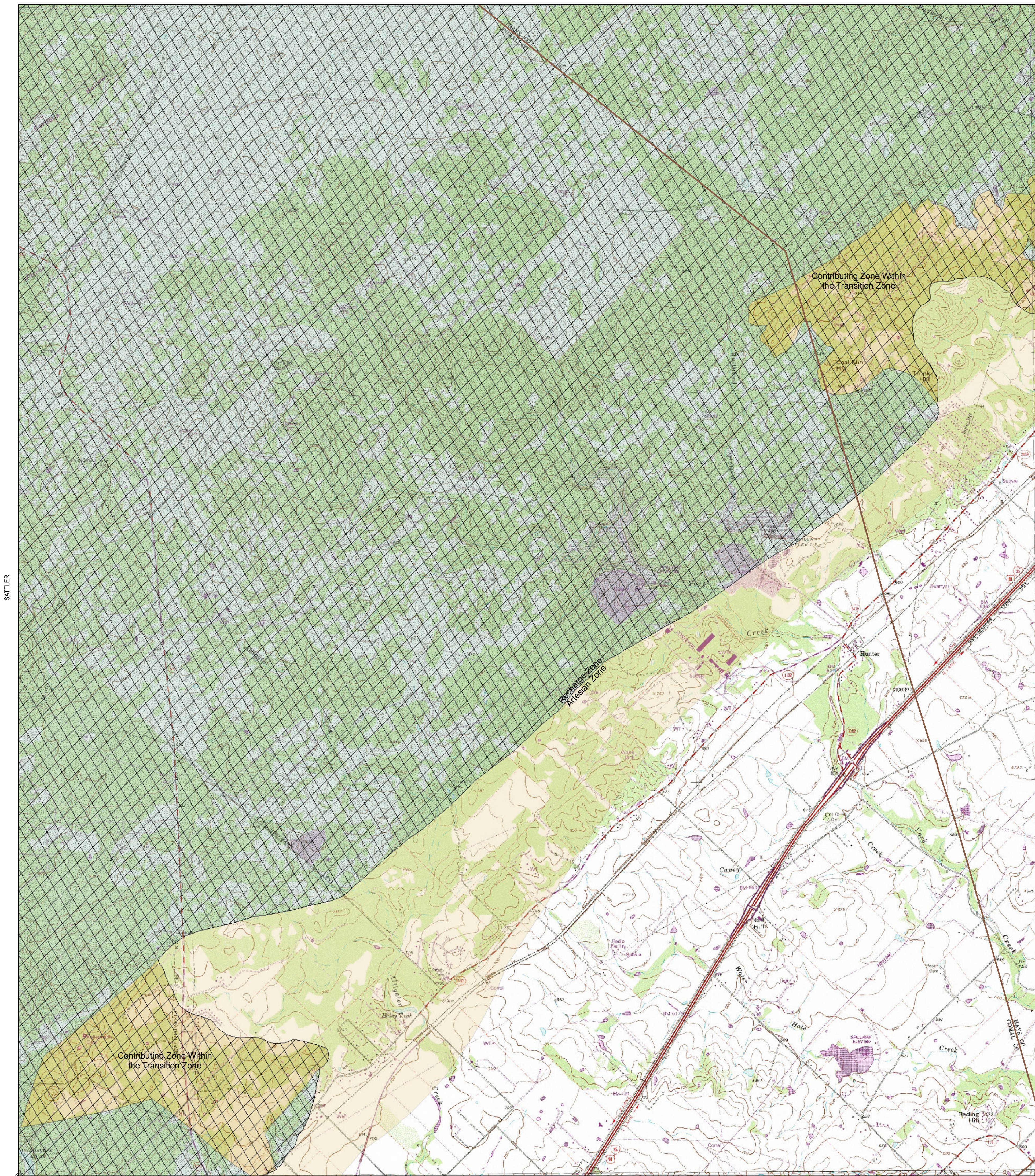
STATE OF TEXAS  
TEXAS WATER DEVELOPMENT BOARD  
WIMBERLEY

HUNTER  
QUADRANGLE  
TEXAS  
7.5 MINUTE SERIES (TOPOGRAPHIC)

UNITED STATES  
DEPARTMENT OF THE INTERIOR  
GEOLOGICAL SURVEY

DEVILS BACKBONE

SAN MARCOS NORTH



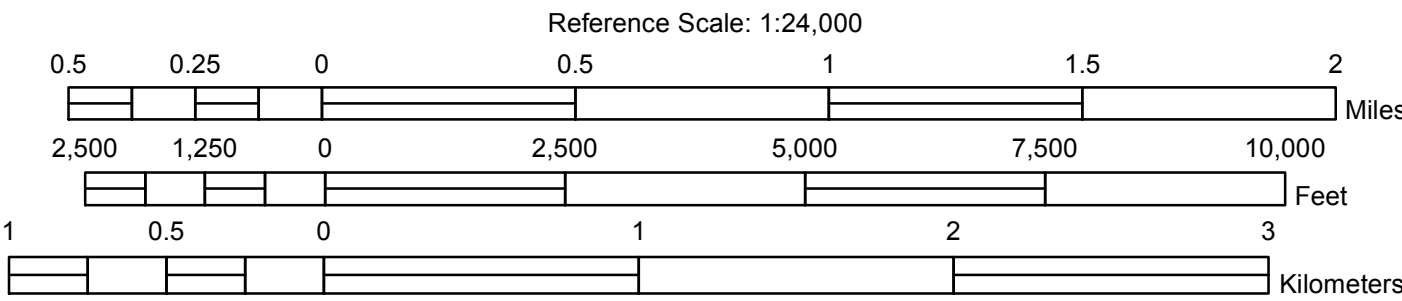
NEW BRAUNFELS WEST

NEW BRAUNFELS EAST

SAN MARCOS SOUTH

GERONIMO

Digital Raster Graphic Enhanced (DRGE) produced through an Innovative partnership agreement between The Land Information Technology Company, Ltd., of Aurora, CO and the USGS.  
DRGE is a scanned image of a USGS standard series 7.5 minute topographic map:  
Mapped, edited and published by the Geological Survey,  
Control by USGS and NCS/NCAA  
Topography by photogrammetric methods from aerial photographs taken and field checked between 1950 and 1990.  
Polyconic projection, 1927 North American datum  
10,000-foot grid based on Texas coordinate system, south central zone (Lambert conformal conic)  
1000-meter Universal Transverse Mercator grid ticks, zone 14.



- This area regulated by EDWARDS AQUIFER AUTHORITY RULES, ch. 713, (Water Quality), subchs. E (Spill Reporting) and F (Regulated Materials Registration, Storage, and Planning).
- The recharge zone is regulated by EDWARDS AQUIFER AUTHORITY RULES, ch. 713, (Water Quality), subch. G (Aboveground and Underground Storage Tanks).
- This area in Hays and Comal Counties regulated by EDWARDS AQUIFER AUTHORITY RULES, ch. 713, (Water Quality), subch. H (Prohibitions).

ROAD CLASSIFICATION

Primary highway, hard surface Light-duty road, hard or improved surface

Secondary highway, hard surface Unimproved road

Interstate Route U. S. Route State Route

Drainage Area

Recharge Zone

Contributing Zone within the Transition Zone

Artesian Zone

QUADRANGLE:  
HUNTER