

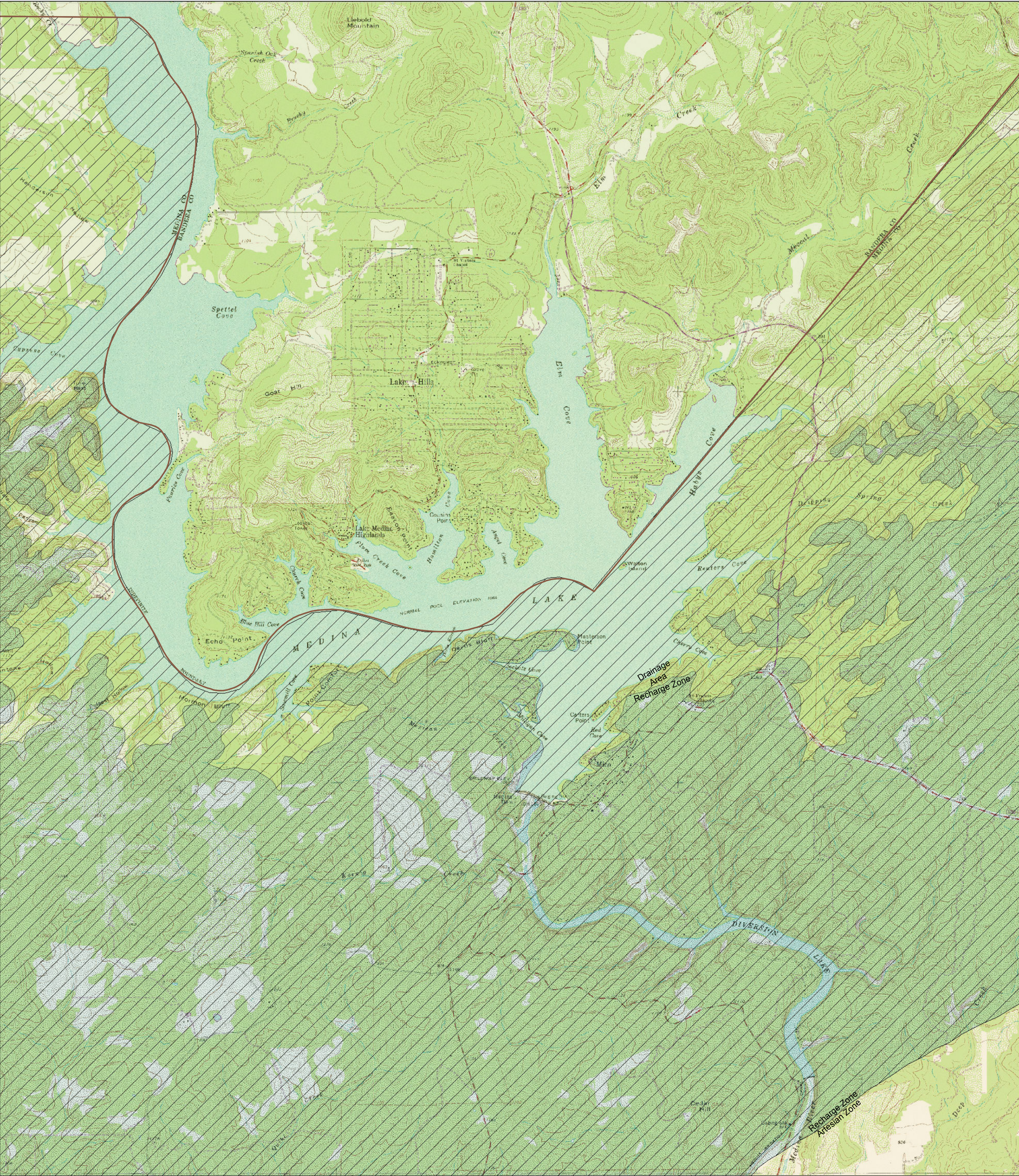
Edwards Aquifer Recharge Zone and Contributing Zone Map  
Edwards Aquifer Authority Rule Chapter 713

UNITED STATES  
DEPARTMENT OF THE INTERIOR  
GEOLOGICAL SURVEY

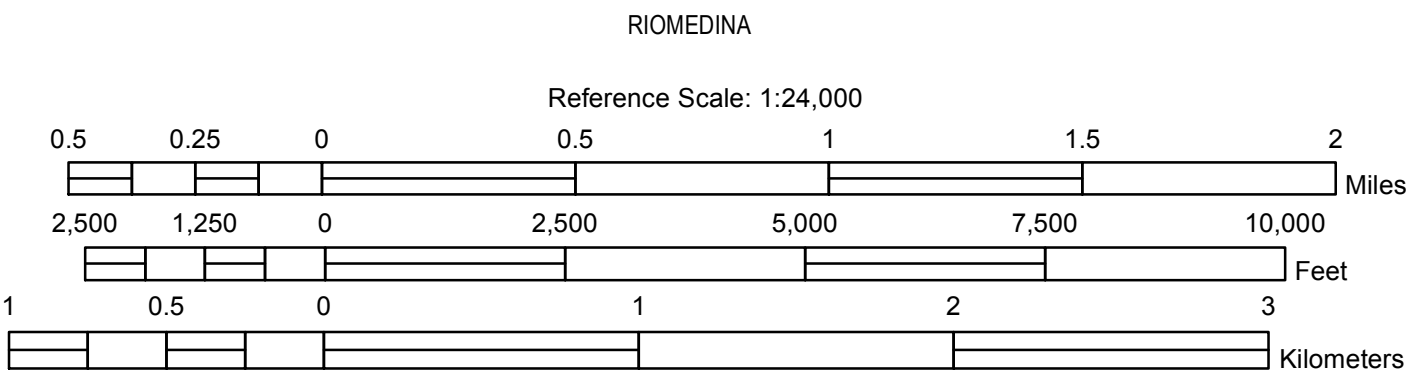
STATE OF TEXAS  
TEXAS WATER DEVELOPMENT BOARD

MEDINA LAKE  
QUADRANGLE  
TEXAS  
7.5 MINUTE SERIES (TOPOGRAPHIC)

PIPE CREEK



Digital Raster Graphic Enhanced (DRGE) produced through an Innovative partnership agreement between The Land Information Technology Company, Ltd., of Aurora, CO and the USGS.  
DRGE is a scanned image of a USGS standard series 7.5 minute topographic map:  
Mapped, edited and published by the Geological Survey.  
Control by USGS and NCS/NCAA  
Topography by photogrammetric methods from aerial photographs taken and field checked between 1950 and 1990.  
Polyconic projection, 1927 North American datum.  
10,000-foot grid based on Texas coordinate system, south central zone (Lambert conformal conic).  
1000-meter Universal Transverse Mercator grid ticks, zone 14.



ROAD CLASSIFICATION

Primary highway, hard surface ..... Light-duty road, hard or improved surface .....

Secondary highway, hard surface ..... Unimproved road .....

Interstate Route U. S. Route State Route

This area regulated by EDWARDS AQUIFER AUTHORITY RULES, ch. 713, (Water Quality), subchs. E (Spill Reporting) and F (Regulated Materials Registration, Storage, and Planning).

The recharge zone is regulated by EDWARDS AQUIFER AUTHORITY RULES, ch. 713, (Water Quality), subch. G (Aboveground and Underground Storage Tanks).

Drainage Area  
Recharge Zone  
Contributing Zone within the Transition Zone  
Artesian Zone

QUADRANGLE:  
MEDINA LAKE