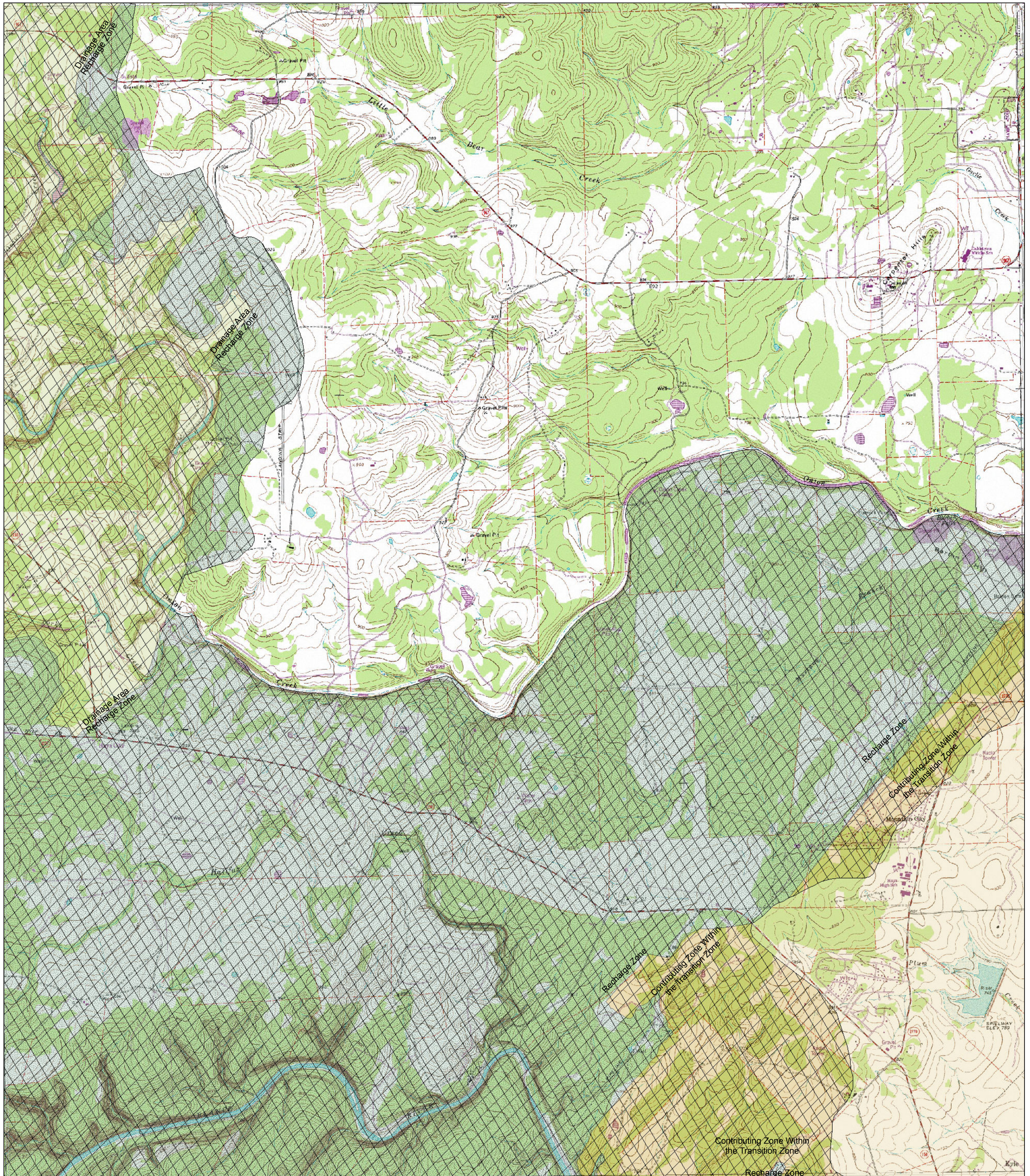


AK HILL



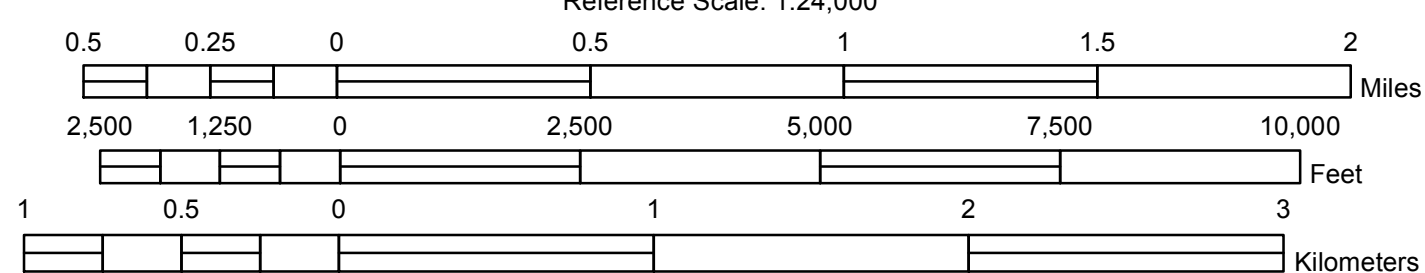
Digital Raster Graphic Enhanced (DRGE) produced through an Innovative partnership agreement between The Land Information Technology Company, Ltd., of Aurora, CO and the USGS.  
DRGE is a scanned image of a USGS standard series 7.5 minute topographic map:

Mapped, edited and published by the Geological Survey.  
Control by USGS and NCS/NCAA  
Topography by photogrammetric methods from aerial  
photographs taken and field checked between 1950 and 1990.  
Polyconic projection. 1927 North American datum  
10,000-foot grid based on Texas coordinate system,  
south central zone (Lambert conformal conic)  
1000-meter Universal Transverse Mercator grid ticks, zone 14.



SAN MARCOS NORTH




Reference Scale: 1:24,000



## ROAD CLASSIFICATION

Primary highway, hard surface \_\_\_\_\_ Light-duty road, hard or improved surface \_\_\_\_\_

Secondary highway, hard surface \_\_\_\_\_ Unimproved road \_\_\_\_\_

 Interstate Route  U. S. Route  State Route

 Interstate Route    U. S. Route    State Route

- Drainage Area
- Recharge Zone
- Contributing Zone within the Transition Zone
- Artesian Zone

QUADRANGLE:  
MOUNTAIN CITY

 This area regulated by EDWARDS AQUIFER AUTHORITY RULES, ch. 713, (Water Quality), subchs. E (Spill Reporting) and F (Regulated Materials Registration, Storage, and Planning).

The recharge zone is regulated by EDWARDS AQUIFER AUTHORITY RULES, ch. 713, (Water Quality), subch. G (Aboveground and Underground Storage Tanks).

 This area in Hays and Comal Counties regulated by EDWARDS AQUIFER AUTHORITY RULES, ch. 713, (Water Quality), subch. H (Prohibitions).

Author: Sarah Eason

Date Saved: 11/10/2014 3:49:40 PM

Document Path: S:\Regulatory\Mountain City.mxd

HILAND