

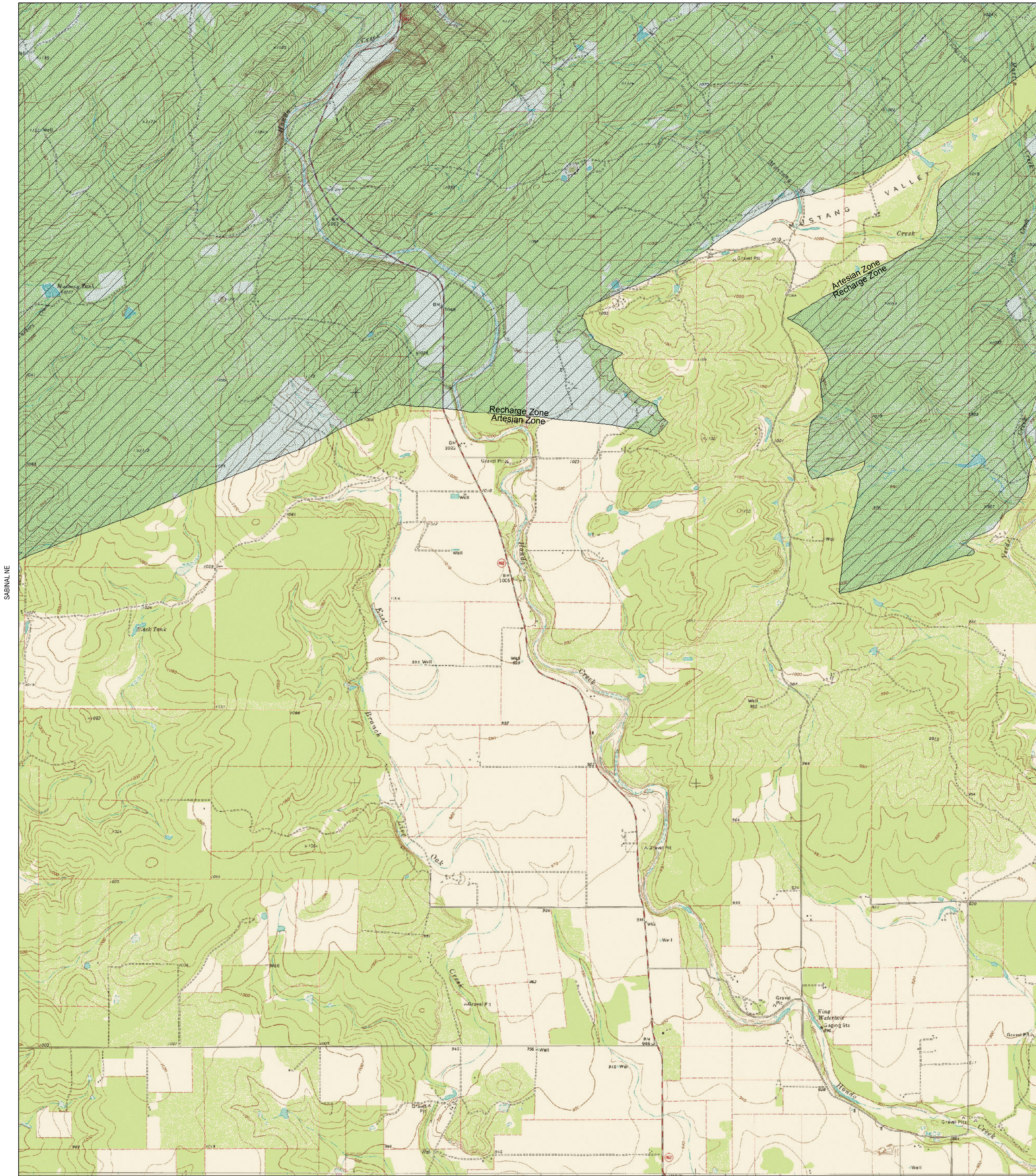
TEXAS MOUNTAIN

UNITED STATES
DEPARTMENT OF THE INTERIOR
GEOLOGICAL SURVEY

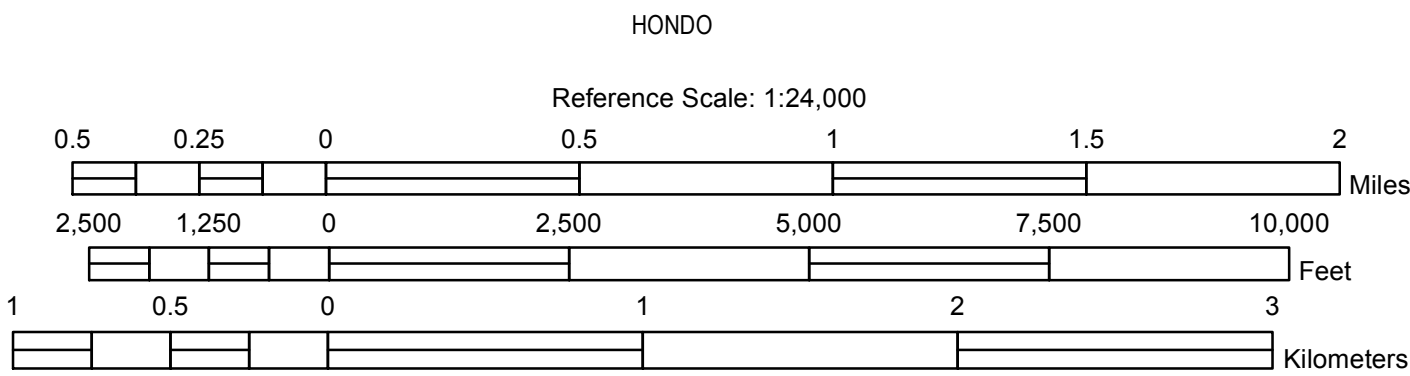
Edwards Aquifer Recharge Zone and Contributing Zone Map
Edwards Aquifer Authority Rule Chapter 713
STATE OF TEXAS
TEXAS WATER DEVELOPMENT BOARD
TWIN HOLLOW

MUSTANG VALLEY
QUADRANGLE
TEXAS
7.5 MINUTE SERIES (TOPOGRAPHIC)

TIMBER CREEK



Digital Raster Graphic Enhanced (DRGE) produced through an Innovative partnership agreement between The Land Information Technology Company, Ltd., of Aurora, CO and the USGS. DRGE is a scanned image of a USGS standard series 7.5 minute topographic map. Mapped, edited and published by the Geological Survey. Control by USGS and NCS/NCAA. Topography by photogrammetric methods from aerial photographs taken and field checked between 1950 and 1990. Polyconic projection, 1927 North American datum. 10,000-foot grid based on Texas coordinate system, south central zone (Lambert conformal conic). 1000-meter Universal Transverse Mercator grid ticks, zone 14.



ROAD CLASSIFICATION

Primary highway, hard surface Light-duty road, hard or improved surface

Secondary highway, hard surface Unimproved road

Interstate Route U. S. Route State Route

This area regulated by EDWARDS AQUIFER AUTHORITY RULES, ch. 713, (Water Quality), subchs. E (Spill Reporting) and F (Regulated Materials Registration, Storage, and Planning).

The recharge zone is regulated by EDWARDS AQUIFER AUTHORITY RULES, ch. 713, (Water Quality), subch. G (Aboveground and Underground Storage Tanks).

Drainage Area
Recharge Zone
Contributing Zone within the Transition Zone
Artesian Zone

QUADRANGLE:
MUSTANG VALLEY