

WIMBERLEY

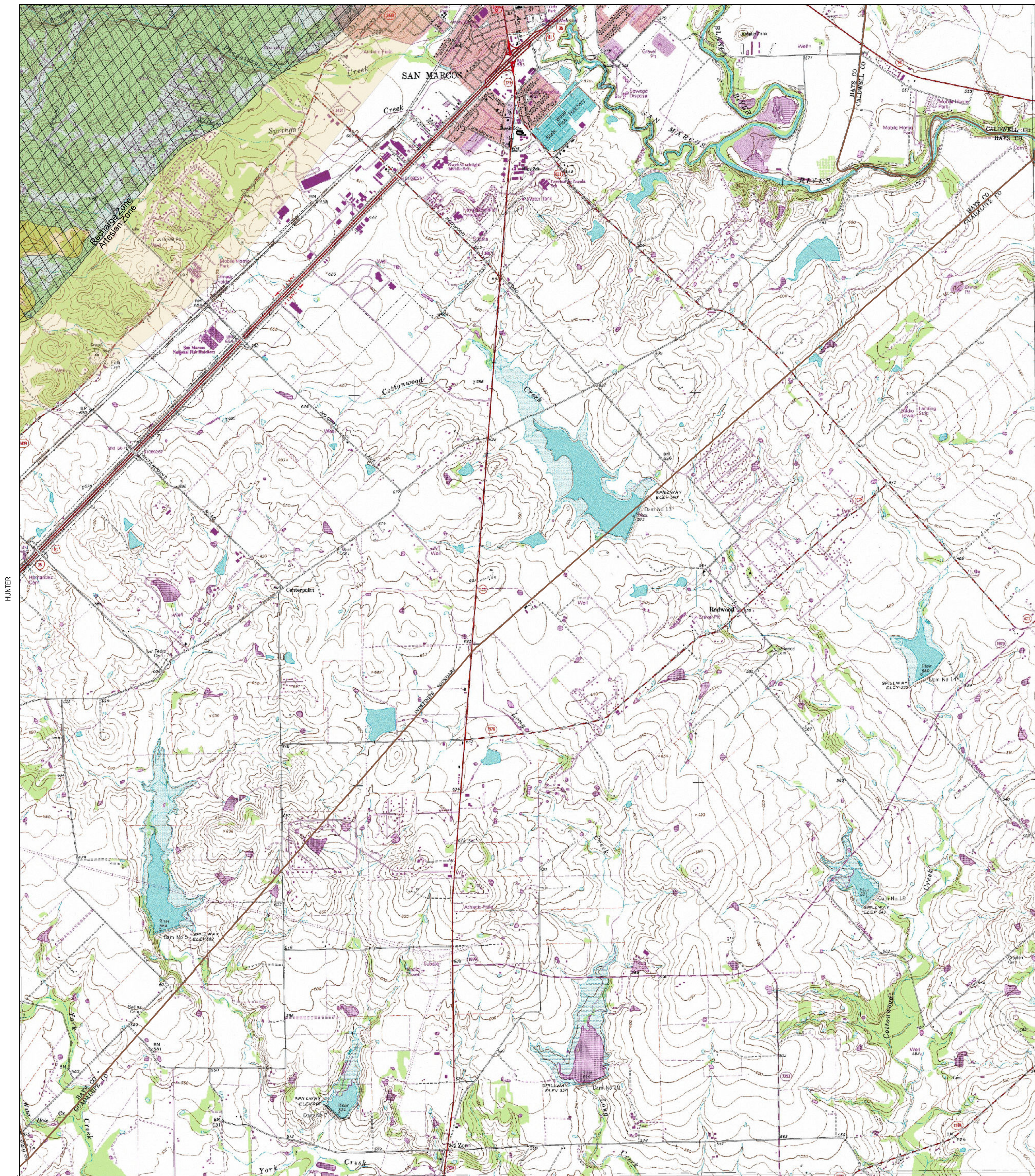
UNITED STATES
DEPARTMENT OF THE INTERIOR
GEOLOGICAL SURVEY

Edwards Aquifer Recharge Zone and Contributing Zone Map Edwards Aquifer Authority Rule Chapter 713

STATE OF TEXAS
TEXAS WATER DEVELOPMENT BOARD
SAN MARCOS NORTH

SAN MARCOS SOUTH
QUADRANGLE
TEXAS
7.5 MINUTE SERIES (TOPOGRAPHIC)

UNLAWD



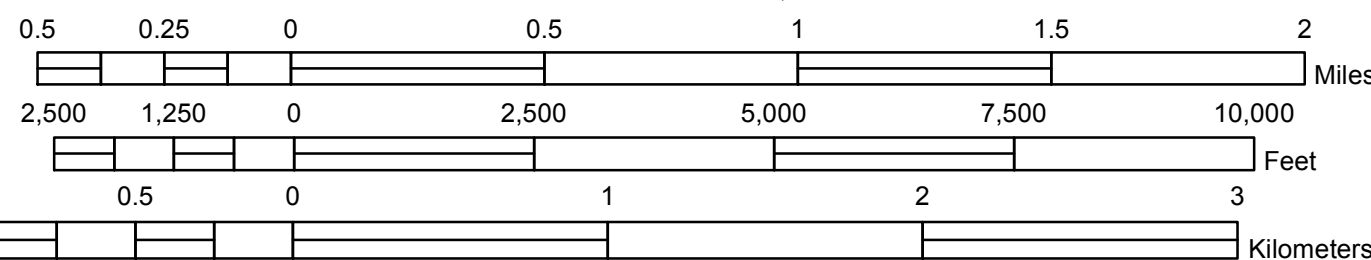
NEW BRAUNFELS EAST

Digital Raster Graphic Enhanced (DRGE) produced through an Innovative partnership agreement between The Land Information Technology Company, Ltd., of Aurora, CO and the USGS.
DRGE is a scanned image of a USGS standard series 7.5 minute topographic map.
Mapped, edited and published by the Geological Survey.
Control by USGS and NCS/NCAA
Topography by photogrammetric methods from aerial photographs taken and field checked between 1950 and 1990.
Polyconic projection, 1927 North American datum.
10,000-foot grid based on Texas coordinate system, south central zone (Lambert conformal conic).
1000-meter Universal Transverse Mercator grid ticks, zone 14.



GERONIMO

Reference Scale: 1:24,000



ROAD CLASSIFICATION

Primary highway, hard surface
Secondary highway, hard surface
Light-duty road, hard or improved surface
Unimproved road
Interstate Route
U. S. Route
State Route

Drainage Area
Recharge Zone
Contributing Zone within the Transition Zone
Artesian Zone

QUADRANGLE:
SAN MARCOS SOUTH

- This area regulated by EDWARDS AQUIFER AUTHORITY RULES, ch. 713, (Water Quality), subchs. E (Spill Reporting) and F (Regulated Materials Registration, Storage, and Planning).
- The recharge zone is regulated by EDWARDS AQUIFER AUTHORITY RULES, ch. 713, (Water Quality), subch. G (Aboveground and Underground Storage Tanks).
- This area in Hays and Comal Counties regulated by EDWARDS AQUIFER AUTHORITY RULES, ch. 713, (Water Quality), subch. H (Prohibitions).