

FISCHER

UNITED STATES
DEPARTMENT OF THE INTERIOR
GEOLOGICAL SURVEY

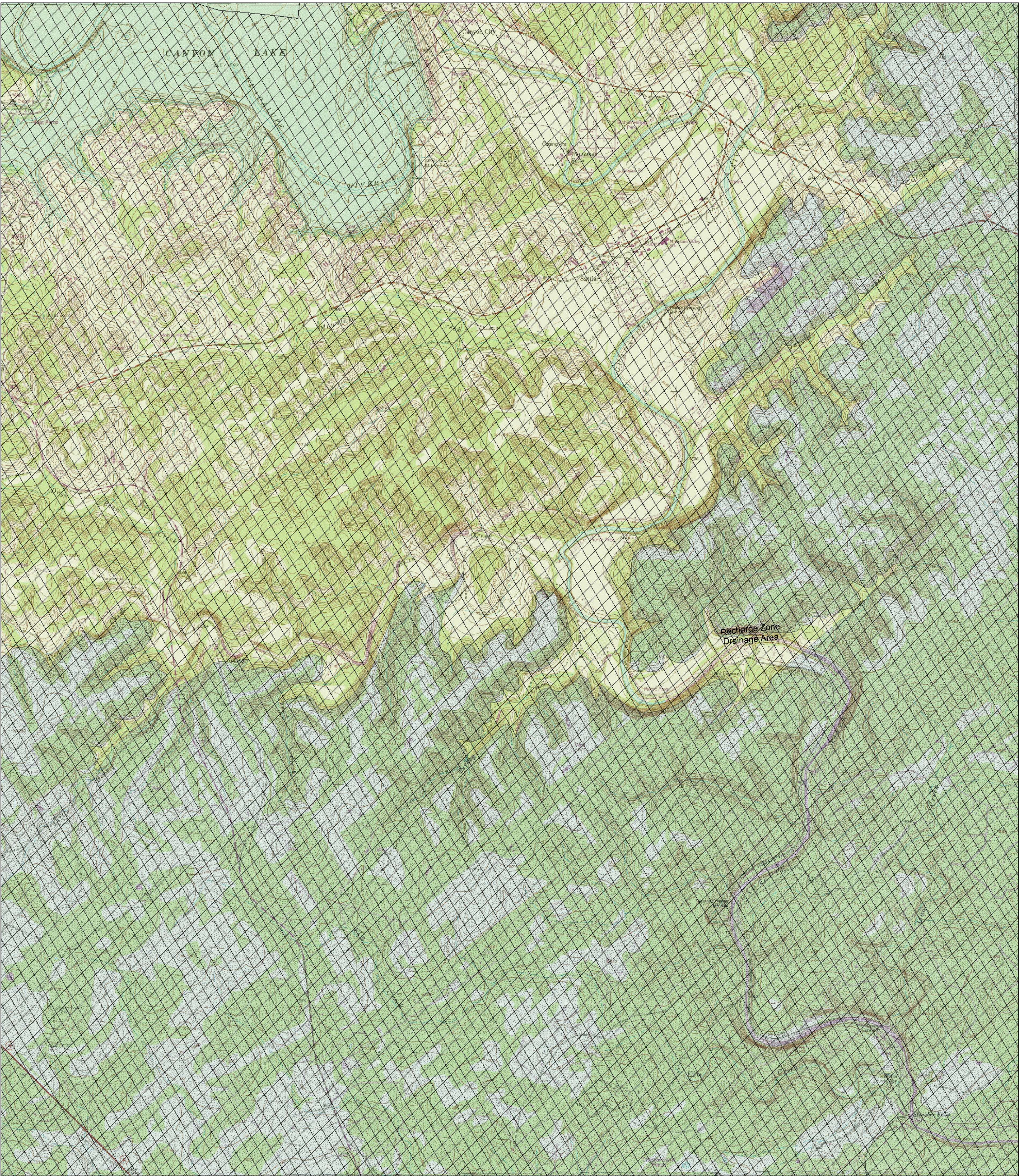
Edwards Aquifer Recharge Zone and Contributing Zone Map
Edwards Aquifer Authority Rule Chapter 713
STATE OF TEXAS
TEXAS WATER DEVELOPMENT BOARD
DEVILS BACKBONE

SATTLER
QUADRANGLE
TEXAS
7.5 MINUTE SERIES (TOPOGRAPHIC)

WIMBERLEY

SMITHSON VALLEY

HUNTER



BAT CAVE

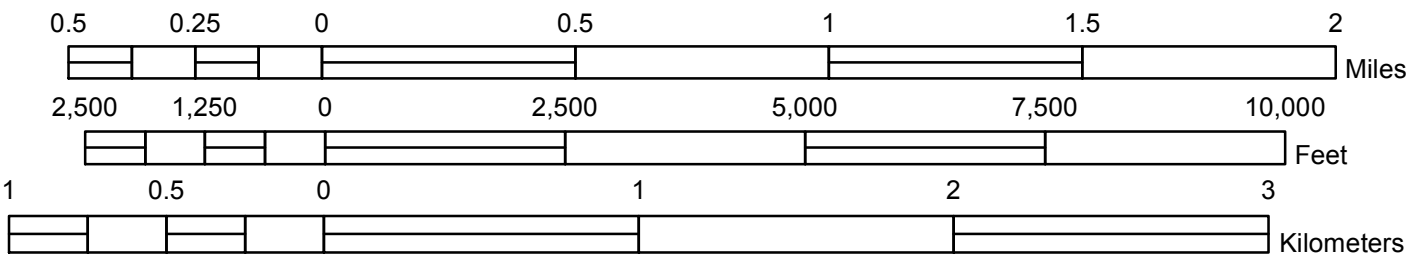
NEW BRAUNFELS EAST

Digital Raster Graphic Enhanced (DRGE) produced through an Innovative partnership agreement between The Land Information Technology Company, Ltd., of Aurora, CO and the USGS.
DRGE is a scanned image of a USGS standard series 7.5 minute topographic map:
Mapped, edited and published by the Geological Survey.
Control by USGS and NCS/NCAA
Topography by photogrammetric methods from aerial photographs taken and field checked between 1950 and 1990.
Polyconic projection, 1927 North American datum.
10,000-foot grid based on Texas coordinate system, south central zone (Lambert conformal conic)
1000-meter Universal Transverse Mercator grid ticks, zone 14.



NEW BRAUNFELS WEST

Reference Scale: 1:24,000



ROAD CLASSIFICATION

Primary highway, hard surface.....
Secondary highway, hard surface.....
Light-duty road, hard or improved surface.....
Unimproved road.....
Interstate Route
U. S. Route
State Route

Drainage Area
Recharge Zone
Contributing Zone within the Transition Zone
Artesian Zone

QUADRANGLE:
SATTLER

- This area regulated by EDWARDS AQUIFER AUTHORITY RULES, ch. 713, (Water Quality), subchs. E (Spill Reporting) and F (Regulated Materials Registration, Storage, and Planning).
- The recharge zone is regulated by EDWARDS AQUIFER AUTHORITY RULES, ch. 713, (Water Quality), subch. G (Aboveground and Underground Storage Tanks).
- This area in Hays and Comal Counties regulated by EDWARDS AQUIFER AUTHORITY RULES, ch. 713, (Water Quality), subch. H (Prohibitions).