

BULVERDE

UNITED STATES  
DEPARTMENT OF THE INTERIOR  
GEOLOGICAL SURVEY

# Edwards Aquifer Recharge Zone and Contributing Zone Map

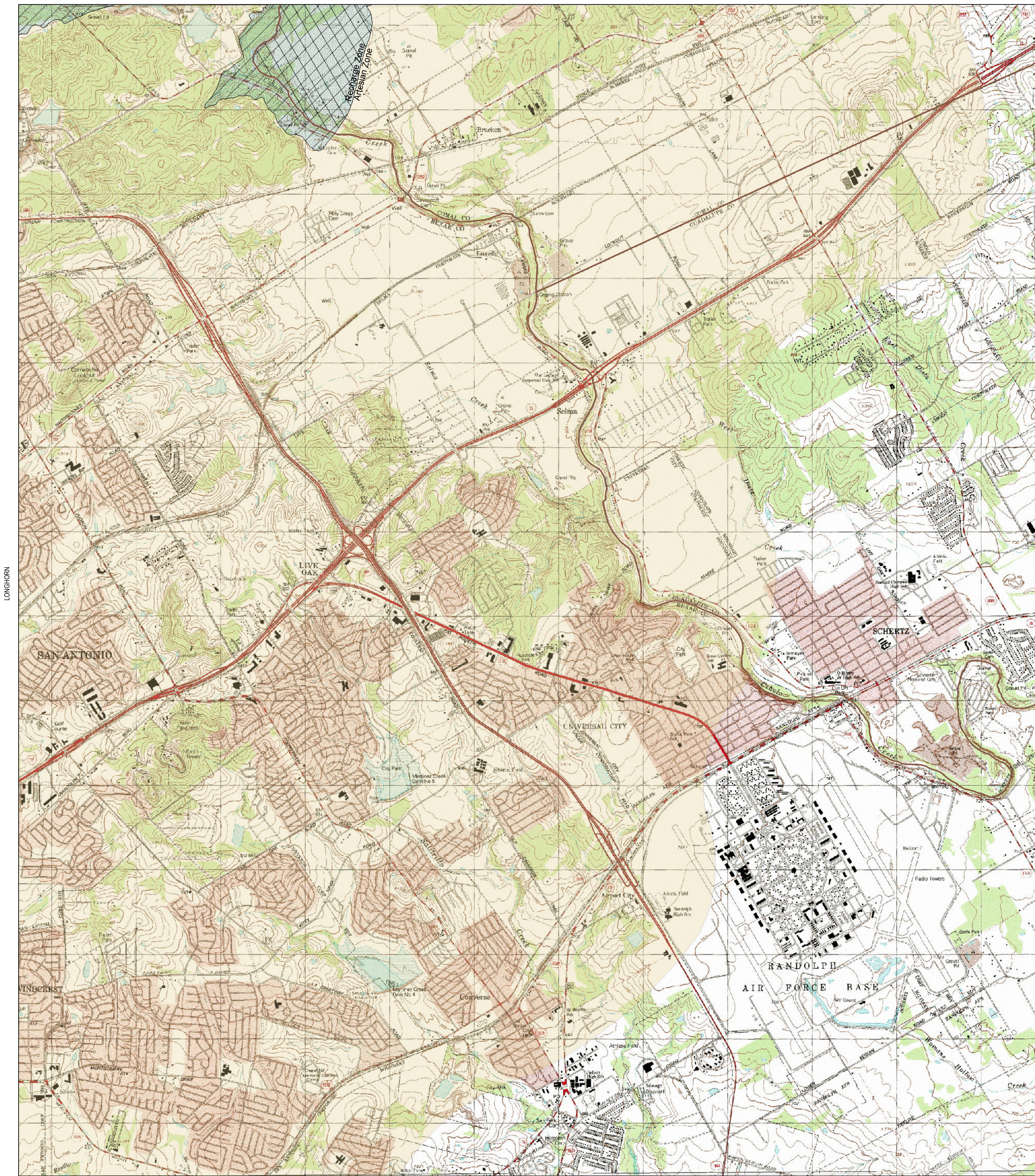
## Edwards Aquifer Authority Rule Chapter 713

STATE OF TEXAS  
TEXAS WATER DEVELOPMENT BOARD

BAT CAVE

SCHERTZ  
QUADRANGLE  
TEXAS  
7.5 MINUTE SERIES (TOPOGRAPHIC)

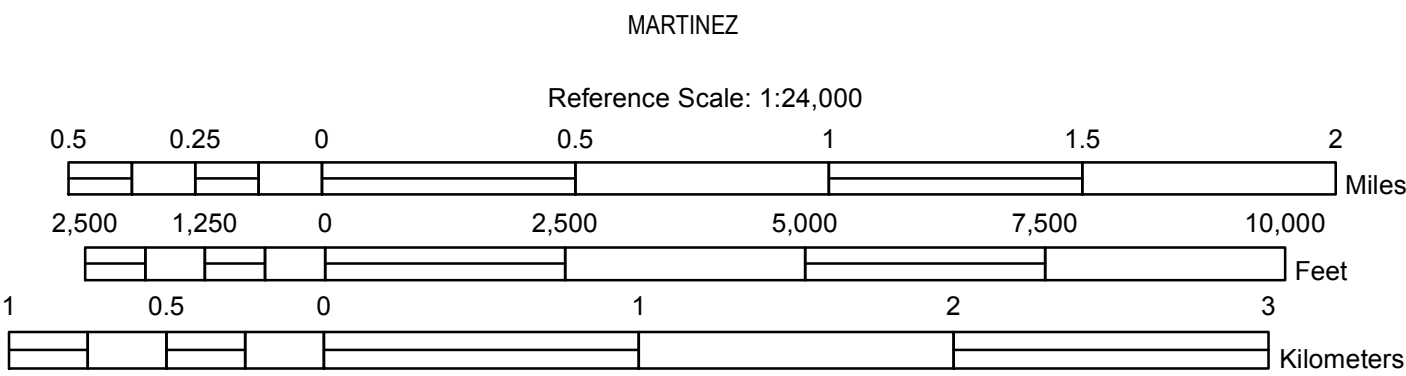
NEW BRAUNFELS WEST



SAN ANTONIO EAST

Digital Raster Graphic Enhanced (DRGE) produced through an Innovative partnership agreement between The Land Information Technology Company, Ltd., of Aurora, CO and the USGS. DRGE is a scanned image of a USGS standard series 7.5 minute topographic map.

Mapped, edited and published by the Geological Survey, Control by USGS and NCS/NCAA  
Topography by photogrammetric methods from aerial photographs taken and field checked between 1950 and 1990.  
Polyconic projection, 1927 North American datum.  
10,000-foot grid based on Texas coordinate system, south central zone (Lambert conformal conic)  
1000-meter Universal Transverse Mercator grid ticks, zone 14.



ROAD CLASSIFICATION

Primary highway, hard surface

Secondary highway, hard surface

Light-duty road, hard or improved surface

Unimproved road

Interstate Route

U. S. Route

State Route

- This area regulated by EDWARDS AQUIFER AUTHORITY RULES, ch. 713, (Water Quality), subchs. E (Spill Reporting) and F (Regulated Materials Registration, Storage, and Planning).
- The recharge zone is regulated by EDWARDS AQUIFER AUTHORITY RULES, ch. 713, (Water Quality), subch. G (Aboveground and Underground Storage Tanks).
- This area in Hays and Comal Counties regulated by EDWARDS AQUIFER AUTHORITY RULES, ch. 713, (Water Quality), subch. H (Prohibitions).

Drainage Area

Recharge Zone

Contributing Zone within the Transition Zone

Artesian Zone

QUADRANGLE:  
SCHERTZ

Author: Sarah Eason

Date Saved: 11/10/2014 2:24:31 PM

Document Path: S:\Regulatory\Regulatory.mxd