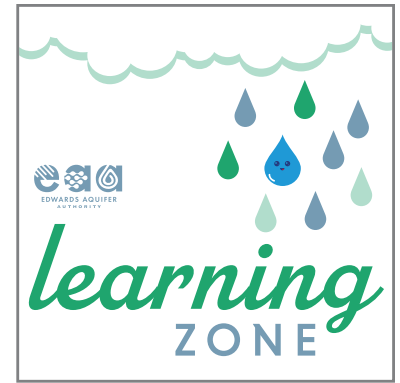


My Look How You've Changed!

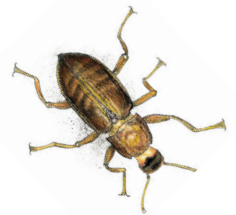
Many of the creatures that live in the Edwards Aquifer ecosystem have adaptive traits -- changes in their body or behavior that help them stay alive. Think through the questions below and use your imagination to create an animal with its own specialized adaptations.

- What is the habitat of your imagination creature?
- Imagine the natural environment where this critter lives.
- What type of food does your creature eat?
- Imagine your creature's teeth and decide if he/she has claws.
- Is your creature a predator, prey, or both?
- How does your creature find safety? Camouflage? Hard scales? You decide!

Draw your first impressions of your creature here. Feel free to use arrows and notes to explain the specific traits you've created.



The Comal Springs Riffle Beetle has water-resistant hairs on its belly that hold an air bubble for it to breathe underwater.



Bonus: Build Your Creature in 3-D

Now, let's take your imagination to the next level.

Get adult permission to gather various art and office supplies from your home or classroom, only limited by your imagination. Consider using one or all of the following:

- Pipe cleaners
- Recycled Bottles and Containers
- Pom-poms
- Yarn/Ribbon/String
- Construction Paper
- Scissors
- Stickers
- Sticks
- Leaves
- glue/tape
- (adult supervision needed) hot glue gun + glue sticks

Build your creature in 3-D and then evaluate whether your adaptations would work in your creature's habitat. Know that you can always build another version to keep making changes.

Share your creatures, whether 2-D or 3-D with us on social media.